

**F** FOR LEASE



**East End Office with Parking**

**\$3,000/Month NNN**

**831 E 2nd Street • Duluth, MN**

**Follmer**  
COMMERCIAL REAL ESTATE

Greg Follmer • Broker MN WI • 218.310.0013 • [GregFollmer@gmail.com](mailto:GregFollmer@gmail.com)

230 East Superior Street • Duluth, Minnesota 55802 • Licensed in Minnesota and Wisconsin

All Information Herein Deemed Reliable but not Guaranteed

# F FOR LEASE

-2,800 SF Office

-Parking in upper lot—5 stalls

-2 compact size stalls next to building

-RE Taxes, Insurance & CAM charges

approximately \$1,000/month

(snow removal extra)

-Separately metered utilities



**East End Office with Parking**

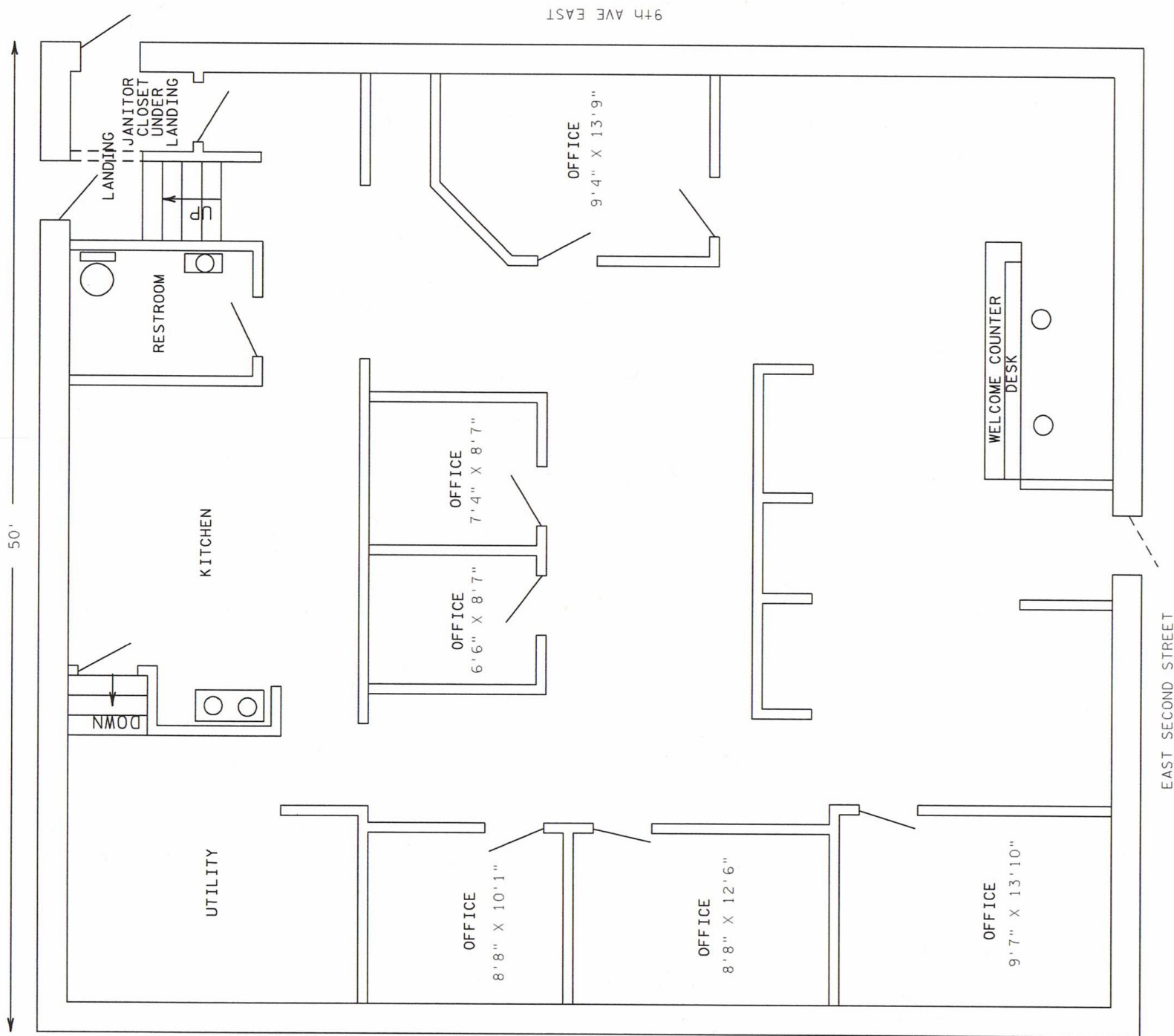
**\$3,000/Month NNN**

**831 E 2nd Street • Duluth, MN**

Greg Follmer • Broker MN WI • 218.310.0013 • [GregFollmer@gmail.com](mailto:GregFollmer@gmail.com)

230 East Superior Street • Duluth, Minnesota 55802 • Licensed in Minnesota and Wisconsin

All Information Herein Deemed Reliable but not Guaranteed



Greg Follmer ▪ Broker MN WI ▪ 218.310.0013 ▪ [GregFollmer@gmail.com](mailto:GregFollmer@gmail.com)

230 East Superior Street ▪ Duluth, Minnesota 55802 ▪ Licensed in Minnesota and Wisconsin

All Information Herein Deemed Reliable but not Guaranteed

# F FOR LEASE

Turn-Key office space in  
Prime Medical District.  
Kitchen, restrooms,  
reception area and private  
offices.

All this AND  
on-site parking.

Perfect for many uses!



**East End Office with Parking**

**\$3,000/Month NNN**

**831 E 2nd Street • Duluth, MN**

Greg Follmer • Broker MN WI • 218.310.0013 • [GregFollmer@gmail.com](mailto:GregFollmer@gmail.com)

230 East Superior Street • Duluth, Minnesota 55802 • Licensed in Minnesota and Wisconsin

All Information Herein Deemed Reliable but not Guaranteed

**F** FOR LEASE



## East End Office with Parking

\$3,000/Month NNN

831 E 2nd Street • Duluth, MN

Greg Follmer • Broker MN WI • 218.310.0013 • [GregFollmer@gmail.com](mailto:GregFollmer@gmail.com)

230 East Superior Street • Duluth, Minnesota 55802 • Licensed in Minnesota and Wisconsin

All Information Herein Deemed Reliable but not Guaranteed